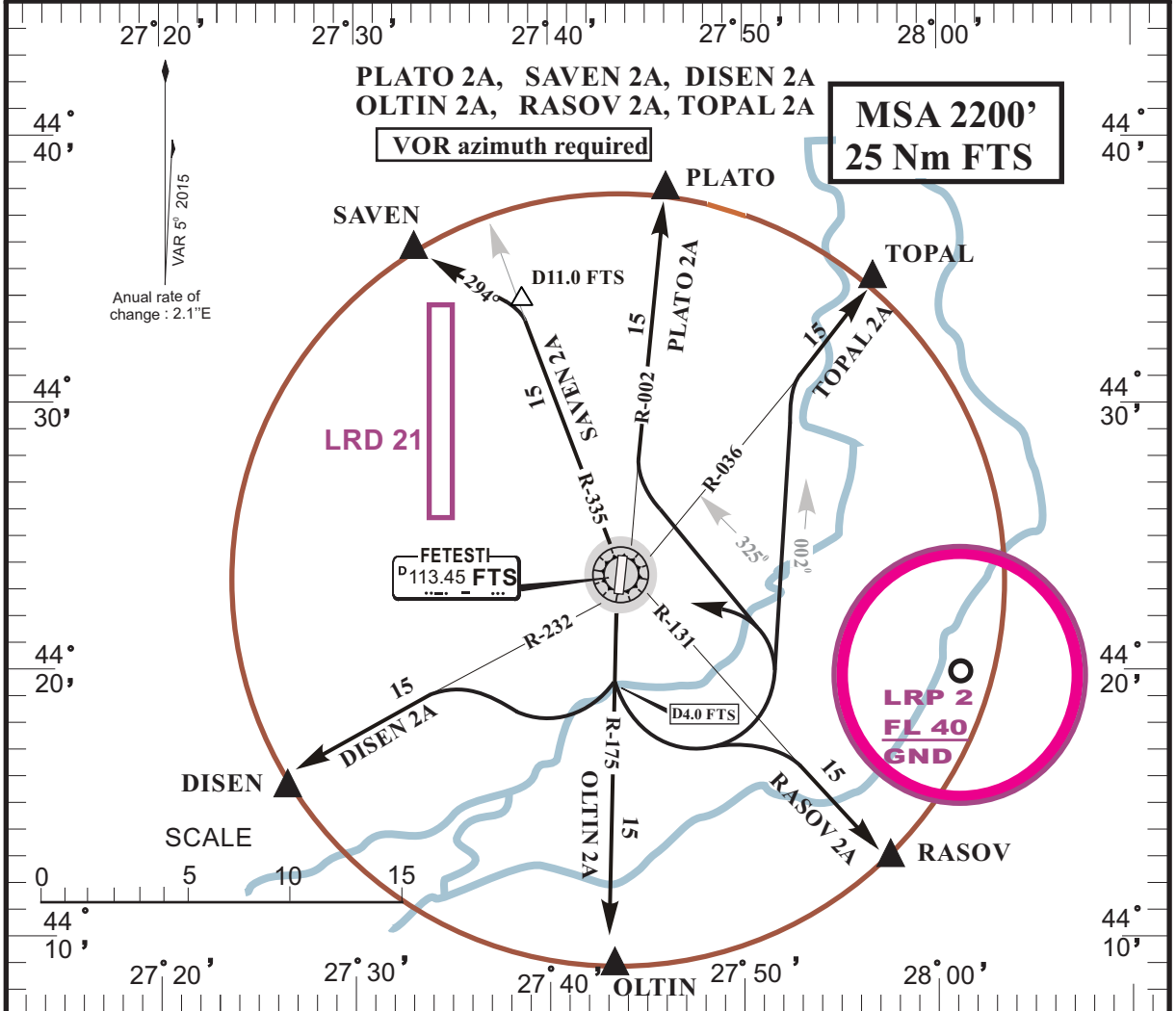


**LRFT/FTS**  
BORCEA-FETESTI

**FETEȘTI, ROMANIA**  
**SID RWY 18**

<i>RUBIN INFO</i> 130.800 /240.600ALT	<i>RUBIN CONTROL</i> 130.800	<i>RUBIN APP</i> 123.375 /309.625	<i>RUBIN TWR/GND</i> 119.325 /232.850	<i>ATIS</i> 122.525
<i>VOR FTS</i> <b>113.45</b>	<i>Trans Altitude: 4000'</i> <i>Trans Level: by ATC</i>	<i>Ad Elev</i> <b>183'</b>	<i>LDA 8200'</i> <i>(2500 m)</i>	



**DEPARTURE ROUTE DESCRIPTION**

**NOTE:** VOR azimuth required. After take-off start turn at D 4.0 FTS.

<b>PLATO 2A</b>	After take-off turn left on track 325° climbing to FL050 to intercept R-002 inbound <b>PLATO</b> .
<b>SAVEN 2A</b>	After take-off turn left climbing to FL050 inbound FTS to intercept R-335 FTS. At D 11.0 FTS turn left on track 294° direct to <b>SAVEN</b> .
<b>DISEN 2A</b>	After take-off turn right climbing to FL050 to intercept R-232 FTS inbound <b>DISEN</b> .
<b>OLTIN 2A</b>	After take-off turn left climbing to FL050 to intercept R-175 FTS inbound <b>OLTIN</b> .
<b>RASOV 2A</b>	After take-off turn left climbing to FL050 to intercept R-131 FTS inbound <b>RASOV</b> .
<b>TOPAL 2A</b>	After take-off turn left climbing to FL050 on track 002° to intercept R-036 FTS inbound <b>TOPAL</b> .